



PLP16 ILLUMINATED PUSHBUTTON SWITCH The Perfect Sealed Panel Mount Switch Solution



C&K's PLP16 series is a compact panel mounted pushbutton with or without illumination. PLP16 has reduced size of Ø16 mm and is available in SPDT or DPDT circuit, a great solution for applications with limited space. This series offers flexibility on CAP sizes, styles and colors and are offered as complete products or separate components with easy installation. The smaller switches are suitable for wide range of control and signaling products on small machines and control panels.

Key Features

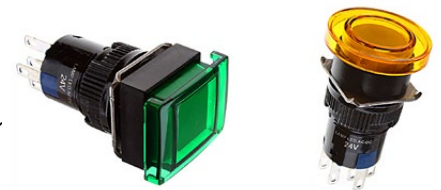
- Positive Tactile Feedback
- Momentary or Lock/Latching version with either SPDT or DPDT contact configuration
- Compact Design Saves Space
- Various color on LED illuminations & cap styles

Key Benefits

- Small overall size (16 mm) able to carry up to 3A
- Provides status of the switches positioning on/off
- Haptic & sound, with clear "click" sound feedback
- Customers can standardise on panel cut out sizing and behind panel space, saving time and money

Key Applications

- Industrial Control Panel
- Off Road Transportation
- Production Control Indicator
- Power Distribution System



Video

